



Saint Pete MRI Continues Commitment to Patients with Low-Dose CT Technology from Sapheneia

Facility is the first in the area to implement Clarity CT to further lower patient exposure to CT radiation dose

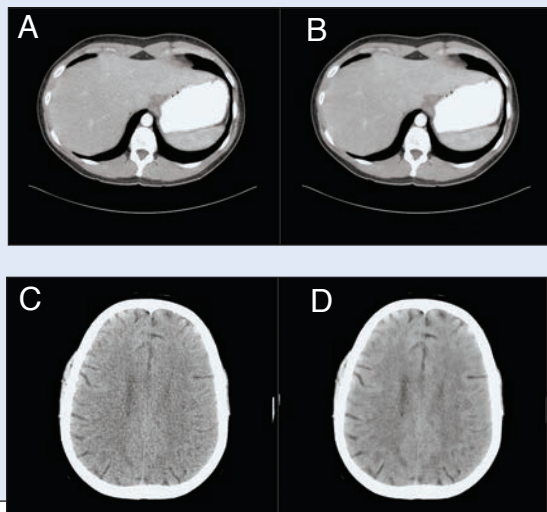
Providing the highest level of patient care through state-of-the-art diagnostic imaging services has been the mantra of Saint Pete MRI, an independent diagnostic testing facility located in St. Petersburg, Florida.



For over 16 years, the outpatient center has been delivering high-quality CT, MRI, digital X-ray and ultrasound/echocardiogram imaging services to referring physicians and patients throughout the Tampa/St. Petersburg metropolitan area.

In addition to a 16-slice CT, Saint Pete MRI has a high-field MRI for performing advanced breast, vascular and neurology studies. The center also boasts a Sleep Diagnostic lab equipped with the latest technology to provide an array of sleep studies.

For more than 16 years, Saint Pete MRI has served the healthcare needs of residents in the St. Petersburg/Tampa Bay area by providing high-quality medical imaging with the latest enhancements to its equipment and services. The facility's high-field MRI, 16-slice CT scanner with low-dose capabilities, digital X-ray, ultrasound, echocardiogram, and sleep diagnostics help provide physicians and patients with the diagnosis they need to create the proper treatment plan.



In the abdomen and neuro low-dose images, the left [A,C] are the original images and the right [B,D] are the processed images using Sapheneia's Clarity CT software. Note the improvement in image quality of the low-dose CT images with the Sapheneia Clarity CT software.

As one of the few outpatient centers in Tampa/St. Petersburg to have both American College of Radiology (ACR) and The Joint Commission accreditation, Saint Pete MRI is focused on patient safety and the quality of care. In fact, Dale Marlowe, Office Manager for Saint Pete MRI, says, "We strive to meet the highest standards of quality and are continually seeking ways to meet patient needs and expectations."

"It is imperative that we, as a leading healthcare provider, are able to exceed expectations in both quality and safety while remaining cost effective," says Kim Mahoney, CEO of Saint Pete MRI.



Saint Pete MRI provides the lowest possible dose at the highest diagnostic imaging quality thanks to Sapheneia's Clarity CT solution.

CT radiation dose has been a concern for the staff at Saint Pete MRI. The center proactively adjusted CT protocols to deliver the lowest possible dose at the highest diagnostic image quality when it installed a 16-slice CT system. "All our protocols for CT are from the ACR and based on patient size and weight," explains Lori Donnaurmmo, RT, Radiology Supervisor. "We worked with our CT manufacturer to adjust the protocol settings to further minimize the radiation dose to the patient," in accordance with the ALARA (As Low As Reasonably Achievable) principle.

However, as new dose lowering solutions entered the market, Saint Pete MRI saw an opportunity to drive dose even lower without impacting the quality of the exam.

"In keeping with the guidelines set forth by both ACR and The Joint Commission, we began to pursue solutions that would enable us to provide the lowest possible dose in CT studies," says Marlowe.



www.saintpetemri.com



A CASE STUDY...

...News from Sapheneia on Recent Installations

Following a national search for the best possible solution, the center selected Sapheneia and the Clarity CT solution.

“Patient safety is our number one priority and the addition of the Sapheneia software will help us to continue to provide our customers with the highest quality and safest medical imaging in the marketplace,” Mahoney adds.

When the implementation team sat down with Donnaurmmo to evaluate current dose levels and make recommendations for additional reductions, they found Saint Pete MRI's dose levels to already be quite low in comparison to other centers. “Every site is different,” says Richard Smillie, Sales Director, Sapheneia. “At Saint Pete MRI, their protocols already delivered a very low dose within the guidelines set forth by ACR. Our recommendation was to reduce their protocols by another 25%.”

The true test of any CT dose-lowering solution is the end result—the quality of the patient images. The goal is for the images to look exactly the same as before the dose was lowered. While lowering the dose can often impact image quality, from what Donnaurmmo has seen first-hand that's not the case at Saint Pete MRI. Dr. James R. Johnson, a radiologist with Sheridan Radiology of Pinellas, interprets the CT studies for Saint Pete MRI and agrees with her assessment.

“I have not seen any difference in the quality of the CT images from Saint Pete MRI,” says Dr. Johnson. “Saint Pete MRI is innovative and forward-thinking by implementing this software. A lot of places talk about it, but many are not implementing dose reduction because it is an additional expense. I'm pleased to know that Saint Pete MRI is using this, and with no decrease in quality it's a win-win situation for everyone involved—especially the patient.”

Jon Shepard, a medical physicist for Saint Pete MRI who is responsible for determining dose levels, concurs with Dr. Johnson. “Anytime we can improve image quality and reduce dose, that's the direction we want to go. This is a good tool that allows us to do this in a way that everyone is comfortable with,” he says.

“Patient safety is our number one priority and the addition of the Sapheneia software will help us to continue to provide our customers with the highest quality and safest medical imaging in the marketplace.”

-Kim Mahoney, CEO



The processing of low-dose CT images with Clarity CT fits seamlessly into the clinical workflow at Saint Pete MRI.

“And, it's a tool that fits seamlessly into the center's workflow, so it doesn't impact the ability to keep patient studies on time and on schedule,” says Becky Payne, RT, lead CT Technologist, “The lower dose levels are built into our protocols so the process is completely automated. A lot of our patients appreciate the fact that we have great equipment. For me as a tech, at the end of the day I'm proud that we are doing what's right for the patient.”

Saint Pete MRI is the first outpatient center in the area to implement CT dose lowering technology, and Mike McCormick, Sales Manager at Saint Pete MRI, is excited at the prospect of providing new imaging services that can greatly benefit the local population. He states, “With the ability to lower dose and generate excellent quality images, we can explore new opportunities to better serve our patients, such as low-dose lung cancer screening.”

Saint Pete MRI not only offers referring physicians and the local community the latest technology, but also the safest.

For More Information



**More Confidence,
More Precision,
Less Dose.**

**www.sapheneia.com
info@sapheneia.com
1.877.722.6569**

Sapheneia, Inc. Home Office: 325 Lake Dillon Drive • Suite 101 • P.O. Box 1476 • Dillon, Colorado 80435, USA